

## AFTER A CHALLENGING YEAR, A POSITIVE OUTLOOK



Darwei Kung  
Head of Commodities and  
Portfolio Manager

IN A NUTSHELL

- The oil market's health will probably largely depend on the extent of the recovery in demand after the coronavirus pandemic.
- With the Fed moving toward targeting an average inflation rate and signaling a willingness to keep inflation above the 2% target for some time, we expect investors to continue to add gold to their portfolios.

Commodities continue to exhibit marked price sensitivity to headline news as the economic recovery from Covid-19 continues. Positive news on vaccines has generated a significant rally in oil prices, but in the near term we expect the demand impact from the pandemic to be a headwind, limiting the scope for further upside. We maintain that the "Phase-One" agreement between the United States and China was positive for global trade and believe that China is likely to continue to act in good faith to fulfill purchase commitments. Fundamentally, we believe that supply growth in most commodities will be limited because of the harm suppliers have suffered during this year's Covid-driven downturn. But in the absence of material global demand destruction, moderate growth should, we believe, lead to improved supply and demand fundamentals across commodities over the coming year.

OPEC+ and other oil-producing nations have begun to bring crude supply back to the market. This, however, is happening gradually in order to account for the slow recovery in global demand. Regardless of the pace of recovery, it will take considerable restraint by OPEC+ to bring inventory levels down to historical averages. The oil market's health will probably largely depend on the extent of future demand recovery from the coronavirus epidemic. Positive news on the vaccine front certainly brightens the outlook. For West Texas Intermediate (WTI)<sup>1</sup> we expect a price of 49 USD per barrel by December 2021.

For natural gas our view is that prices will continue to be volatile, moving in synchrony with weather forecasts for the

winter season. Lately, U.S. natural gas has fallen significantly as the two-week weather forecast has been trending toward warmer weather for the United States.

Overall, investor interest in gold has softened in the face of the risk rally driven by positive vaccine trials and rollout optimism. The outperformance of base metals over precious metal continues to reflect investors' preference for assets that benefit from a cyclical recovery. Copper prices, for example, have been propelled by Chinese restocking. The Covid-19 recovery and global infrastructure spending could also help copper. Gold appears to have found support at the 1,800 dollars-per-ounce level. Central banks continue to affirm "lower-for-longer" interest-rate policies globally. With the U.S. Federal Reserve (the Fed) moving toward targeting an average inflation rate and signaling a willingness to keep inflation above the 2% target for some time, we expect investors to continue to add gold to their portfolios as a hedge against unexpected sharp rises in inflation. Despite the positive vaccine news, we therefore consider it likely that gold prices could reach 2,100 dollars per ounce by December 2021, an increase of around 12% on their current level.

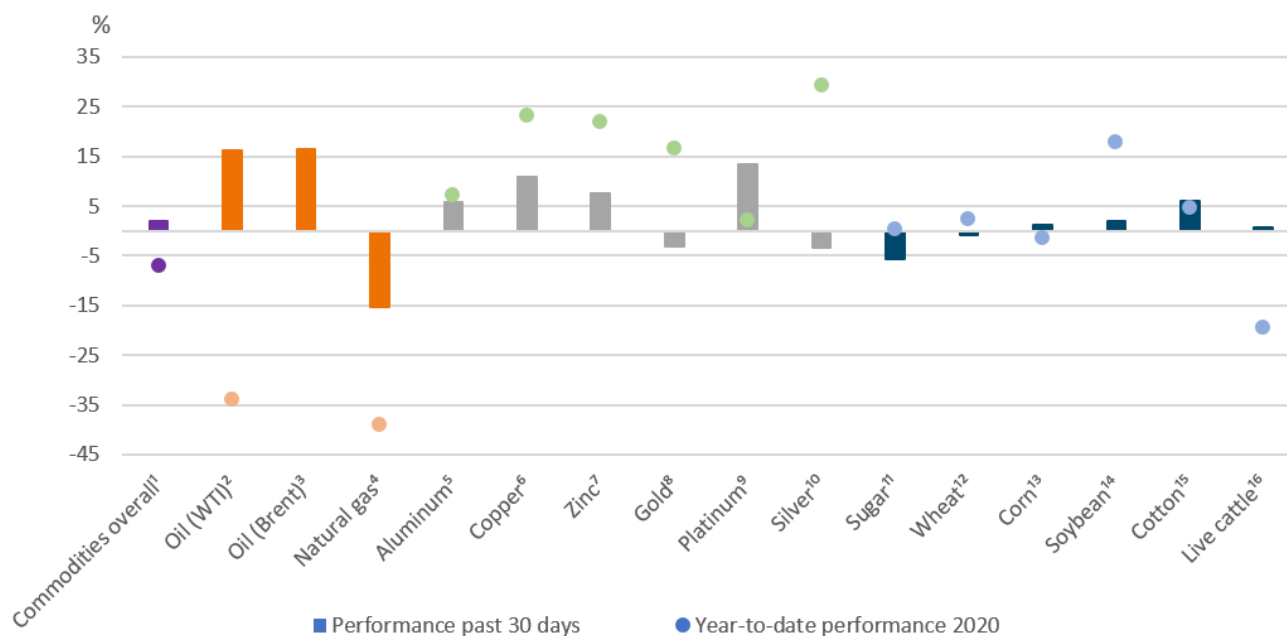
Across the agricultural complex, we think dollar fluctuations are likely to continue to drive investment flows. Global importers, including China, are in need of corn and soybeans from the United States through at least January, pointing to strong export demand regardless of currency fluctuations. The currently tight inventory numbers from the U.S. Department of Agriculture should go a long way toward supporting elevated crop prices. We believe the market's attention

<sup>1</sup> WTI 12-month forward

All opinions and claims are based upon data on 12/15/20 and may not come to pass. This information is subject to change at any time, based upon economic, market and other considerations and should not be construed as a recommendation. Alternative investments may be speculative and involve significant risks including illiquidity, heightened potential for loss and lack of transparency. Alternatives are not suitable for all clients. Past performance is not indicative of future returns. Forecasts are based on assumptions, estimates, opinions and hypothetical models that may prove to be incorrect. Source: DWS Investment Management Americas Inc.

will be on South American production, where we see little room for supply disappointments. The risk-reward balance looks bullish, particularly for corn and soybeans, but the direction of prices from here will be very weather dependent in our view. We feel that wheat is fundamentally overvalued and likely to underperform, while softs face considerable supply uncertainty and are likely to remain volatile.

## PAST 30-DAY AND YEAR-TO-DATE PERFORMANCE OF MAJOR COMMODITY CLASSES



Past performance is not indicative of future returns.

Sources: Bloomberg Finance L.P., DWS Investment Management Americas Inc. as of 12/15/20

<sup>1</sup>Bloomberg Commodity Index <sup>2</sup>Bloomberg WTI Crude Oil Subindex <sup>3</sup>Bloomberg Brent Crude Subindex <sup>4</sup>Bloomberg Natural Gas Subindex <sup>5</sup>Bloomberg Aluminum Subindex <sup>6</sup>Bloomberg Copper Subindex <sup>7</sup>Bloomberg Zinc Subindex <sup>8</sup>Bloomberg Gold Subindex <sup>9</sup>Bloomberg Platinum Subindex <sup>10</sup>Bloomberg Silver Subindex <sup>11</sup>Bloomberg Sugar Subindex <sup>12</sup>Bloomberg Wheat Subindex <sup>13</sup>Bloomberg Corn Subindex <sup>14</sup>Bloomberg Soybeans Subindex <sup>15</sup>Bloomberg Cotton Subindex <sup>16</sup>Bloomberg Live Cattle Subindex

## GLOSSARY

**Bloomberg Aluminum Subindex (BCOMAL)** is a commodity group subindex of the Bloomberg CI (BCOM) composed of futures contracts on Aluminum.

**Bloomberg Brent Crude Subindex (BCOMCO)** is a commodity group subindex of the Bloomberg CI (BCOM) composed of futures contracts on Brent Crude.

The **Bloomberg Commodity Index (BCOM)** traces 23 commodities and reflects commodity futures price movements.

**Bloomberg Copper Subindex (BCOMHG)** is a commodity group subindex of the Bloomberg CI (BCOM) composed of futures contracts on Copper.

**Bloomberg Corn Subindex (BCOMCN)** is a commodity group subindex of the Bloomberg CI (BCOM) composed of futures contracts on Corn.

**Bloomberg Cotton Subindex (BCOMCT)** is a commodity group subindex of the Bloomberg CI (BCOM) composed of futures contracts on Cotton.

**Bloomberg Gold Subindex (BCOMGC)** is a commodity group subindex of the Bloomberg CI (BCOM) composed of futures contracts on Gold.

**Bloomberg Live Cattle Subindex (BCOMLC)** is a commodity group subindex of the Bloomberg CI (BCOM) composed of futures contracts on Live Cattle.

**Bloomberg Natural Gas Subindex (BCOMNG)** is a commodity group subindex of the Bloomberg CI (BCOM) composed of futures contracts on Natural Gas.

**Bloomberg Platinum Subindex (BCOMPL)** is a commodity group subindex of the Bloomberg CI (BCOM) composed of futures contracts on Platinum.

**Bloomberg Silver Subindex (BCOMSI)** is a commodity group subindex of the Bloomberg CI (BCOM) composed of futures contracts on Silver.

**Bloomberg Soybeans Subindex (BCOMSY)** is a commodity group subindex of the Bloomberg CI (BCOM) composed of futures contracts on Soybeans.

**Bloomberg Sugar Subindex (BCOMSB)** is a commodity group subindex of the Bloomberg CI (BCOM) composed of futures contracts on Sugar.

**Bloomberg Wheat Subindex (BCOMWH)** is a commodity group subindex of the Bloomberg CI (BCOM) composed of futures contracts on Wheat.

**Bloomberg WTI Crude Oil Subindex (BCOMCL)** is a subindex of the Bloomberg CI (BCOM) composed of futures contracts on WTI crude oil.

**Bloomberg Zinc Subindex (BCOMZS)** is a subindex of the Bloomberg CI (BCOM) composed of futures contracts on Zinc.

A **bull market** is a financial market where prices are rising - usually used in the context of equities markets.

A **central bank** manages a state's currency, money supply and interest rates.

The **US Dollar** is the common currency of the United States of America and is the most held reserve currency in the world.

**Fundamentals** are data giving information about the general well-being of companies, securities or currencies and serving for the subsequent valuation of these as an investment opportunity.

A **hedge** is an investment to reduce the risk of adverse price movements in an asset.

**Inflation** is the rate at which the general level of prices for goods and services is rising and, subsequently, purchasing power is falling.

**OPEC+** is an informal alliance of OPEC members and other oil-producing countries, led by Russia, aiming to coordinate their production strategies.

The **U.S. Federal Reserve**, often referred to as "**the Fed**," is the central bank of the United States.

**Volatility** is the degree of variation of a trading-price series over time. It can be used as a measure of an asset's risk.

**West Texas Intermediate (WTI)** is a grade of crude oil used as a benchmark in oil pricing.

## APPENDIX: PERFORMANCE OVER THE PAST 5 YEARS (12-MONTH PERIODS)

	11/15 - 11/16	11/16 - 11/17	11/17 - 11/18	11/18 - 11/19	11/19 - 11/20
Bloomberg Commodity Index	6.1%	-0.3%	-3.7%	-6.6%	-3.6%
Bloomberg WTI Crude Oil Subindex	-14.8%	5.4%	-7.8%	5.7%	-48.9%
Bloomberg Brent Crude Subindex	-4.9%	14.1%	-0.9%	8.7%	-30.4%
Bloomberg Natural Gas Subindex	-0.7%	-27.3%	41.0%	-57.6%	-35.7%
Bloomberg Gold Subindex	8.9%	6.9%	-6.5%	16.8%	17.1%
Bloomberg Silver Subindex	14.8%	-2.3%	-16.2%	16.3%	27.2%
Bloomberg Platinum Subindex	8.5%	2.1%	-16.7%	9.6%	4.7%
Bloomberg Copper Subindex	26.3%	13.0%	-11.9%	-5.7%	26.1%
Bloomberg Aluminum Subindex	16.2%	14.8%	-3.6%	-13.3%	9.1%
Bloomberg Zinc Subindex	69.4%	16.1%	-16.3%	-6.0%	20.0%
Bloomberg Corn Subindex	-14.2%	-10.8%	-7.1%	-9.4%	0.7%
Bloomberg Wheat Subindex	-26.1%	-11.0%	2.6%	1.3%	3.5%
Bloomberg Soybeans Subindex	16.3%	-9.2%	-15.4%	-10.5%	26.4%
Bloomberg Sugar Subindex	26.9%	-27.6%	-22.2%	-9.9%	7.0%
Bloomberg Cotton Subindex	12.8%	1.9%	7.3%	-20.7%	6.9%
Bloomberg Live Cattle Subindex	-8.0%	15.2%	-4.9%	2.1%	-19.9%

Past performance is not indicative of future returns.

Sources: Bloomberg Finance L.P., DWS Investment Management Americas Inc. as of 12/15/20

All opinions and claims are based upon data on 12/15/20 and may not come to pass. This information is subject to change at any time, based upon economic, market and other considerations and should not be construed as a recommendation. Alternative investments may be speculative and involve significant risks including illiquidity, heightened potential for loss and lack of transparency. Alternatives are not suitable for all clients. Past performance is not indicative of future returns. Forecasts are based on assumptions, estimates, opinions and hypothetical models that may prove to be incorrect. Source: DWS Investment Management Americas Inc.

## IMPORTANT INFORMATION

The brand DWS represents DWS Group GmbH & Co. KGaA and any of its subsidiaries, such as DWS Distributors, Inc., which offers investment products, or DWS Investment Management Americas Inc. and RREEF America L.L.C., which offer advisory services.

This document has been prepared without consideration of the investment needs, objectives or financial circumstances of any investor. Before making an investment decision, investors need to consider, with or without the assistance of an investment adviser, whether the investments and strategies described or provided by DWS, are appropriate, in light of their particular investment needs, objectives and financial circumstances. Furthermore, this document is for information/discussion purposes only and does not and is not intended to constitute an offer, recommendation or solicitation to conclude a transaction or the basis for any contract to purchase or sell any security, or other instrument, or for DWS to enter into or arrange any type of transaction as a consequence of any information contained herein and should not be treated as giving investment advice. DWS, including its subsidiaries and affiliates, does not provide legal, tax or accounting advice. This communication was prepared solely in connection with the promotion or marketing, to the extent permitted by applicable law, of the transaction or matter addressed herein, and was not intended or written to be used, and cannot be relied upon, by any taxpayer for the purposes of avoiding any U.S. federal tax penalties. The recipient of this communication should seek advice from an independent tax advisor regarding any tax matters addressed herein based on its particular circumstances. Investments with DWS are not guaranteed, unless specified. Although information in this document has been obtained from sources believed to be reliable, we do not guarantee its accuracy, completeness or fairness, and it should not be relied upon as such. All opinions and estimates herein, including forecast returns, reflect our judgment on the date of this report, are subject to change without notice and involve a number of assumptions which may not prove valid.

Investments are subject to various risks, including market fluctuations, regulatory change, counterparty risk, possible delays in repayment and loss of income and principal invested. The value of investments can fall as well as rise and you may not recover the amount originally invested at any point in time. Furthermore, substantial fluctuations of the value of the investment are possible even over short periods of time. Further, investment in international markets can be affected by a host of factors, including political or social conditions, diplomatic relations, limitations or removal of funds or assets or imposition of (or change in) exchange control or tax regulations in such markets. Additionally, investments denominated in an alternative currency will be subject to currency risk, changes in exchange rates which may have an adverse effect on the value, price or income of the investment. This document does not identify all the risks (direct and indirect) or other considerations which might be material to you when entering into a transaction. The terms of an investment may be exclusively subject to the detailed provisions, including risk considerations, contained in the Offering Documents. When making an investment decision, you should rely on the final documentation relating to the investment and not the summary contained in this document.

This publication contains forward looking statements. Forward looking statements include, but are not limited to assumptions, estimates, projections, opinions, models and hypothetical performance analysis. The forward looking statements expressed constitute the author's judgment as of the date of this material. Forward looking statements involve significant elements of subjective judgments and analyses and changes thereto and/or consideration of different or additional factors could have a material impact on the results indicated. Therefore, actual results may vary, perhaps materially, from the results contained herein. No representation or warranty is made by DWS as to the reasonableness or completeness of such forward looking statements or to any other financial information contained herein. We assume no responsibility to advise the recipients of this document with regard to changes in our views.

No assurance can be given that any investment described herein would yield favorable investment results or that the investment objectives will be achieved. Any securities or financial instruments presented herein are not insured by the Federal Deposit Insurance Corporation ("FDIC") unless specifically noted, and are not guaranteed by or obligations of DWS or its affiliates. We or our affiliates or persons associated with us may act upon or use material in this report prior to publication. DB may engage in transactions in a manner inconsistent with the views discussed herein. Opinions expressed herein may differ from the opinions expressed by departments or other divisions or affiliates of DWS. This document may not be reproduced or circulated without our written authority. The manner of circulation and distribution of this document may be restricted by law or regulation in certain countries. This document is not directed to, or intended for distribution to or use by, any person or entity who is a citizen or resident of or located in any locality, state, country or other jurisdiction, including the United States, where such distribution, publication, availability or use would be contrary to law or regulation or which would subject DWS to any registration or licensing requirement within such jurisdiction not currently met within such jurisdiction. Persons into whose possession this document may come are required to inform themselves of, and to observe, such restrictions.

Past performance is no guarantee of future results; nothing contained herein shall constitute any representation or warranty as to future performance. Further information is available upon investor's request. All third party data (such as MSCI, S&P & Bloomberg) are copyrighted by and proprietary to the provider.

**For investors in Bermuda:** This is not an offering of securities or interests in any product. Such securities may be offered or sold in Bermuda only in compliance with the provisions of the Investment Business Act of 2003 of Bermuda which regulates the sale of securities in Bermuda. Additionally, non-Bermudian persons (including companies) may not carry on or engage in any trade or business in Bermuda unless such persons are permitted to do so under applicable Bermuda legislation.

© 2020 DWS Investment GmbH, Mainzer Landstraße 11-17, 60329 Frankfurt am Main, Germany.

All rights reserved.